

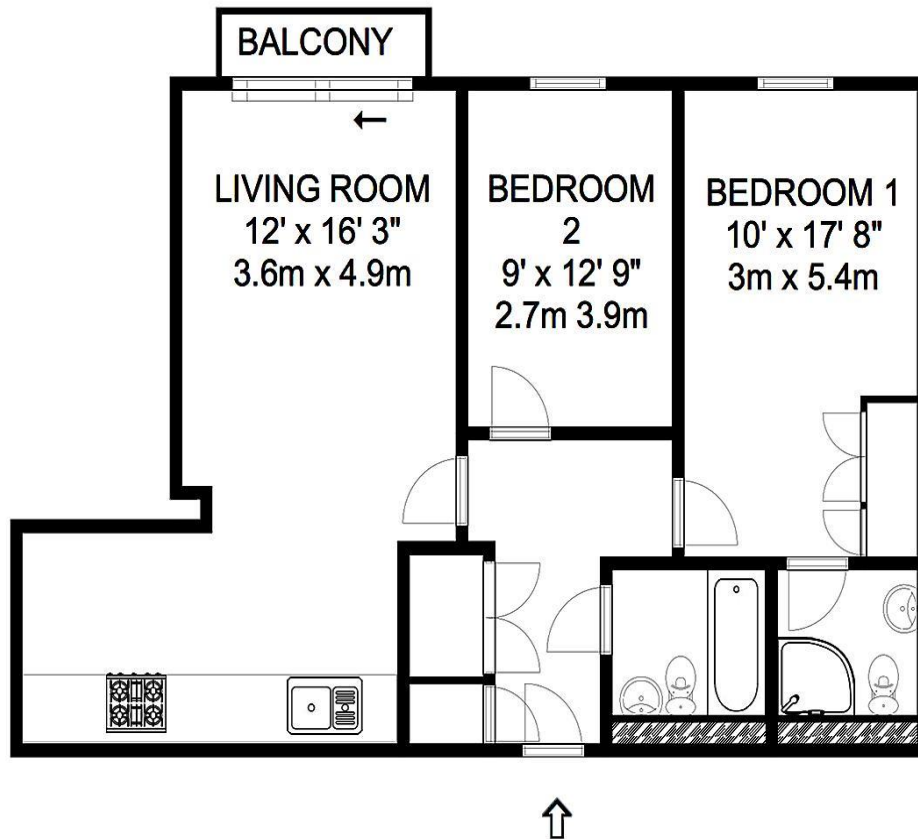


241 The Heart Walton On Thames Surrey KT12 1GB

£1750pcm + Initial deposit



APPROXIMATE GROSS INTERNAL FLOOR AREA 793 sq. ft. 74 m sq.



Whilst every attempt has been made to ensure the accuracy of the floor plan contained here, measurements are approximate and no responsibility is taken for any error, omission, or mis-statement. The plan is for illustrative purposes only and should be used as such by any prospective purchaser.

A modern second floor two-bedroom, two-bathroom apartment situated in the Heart of Walton development. Internally the property offers all the benefits of a brand-new home with modern luxury spaces fitted and finished with superb style and taste. Being positioned in Central Walton-on-Thames this unique development offers a fantastic lifestyle with easy access to all the local amenities including a selection of retail stores, restaurants, coffee bars a cinema and riverside pubs. Walton-on-Thames Mainline Station is also serviced by a regular fast train service into London Waterloo. Available unfurnished NOW. EPC Rating C.



AGENTS NOTES: These details do not constitute any part of an offer or contract. In issuing them we do not have any authority to give any warranty or representation whatsoever in respect of this property. These details are provided without any responsibility on our part or the part of the vendors. No statements in these details are to be relied upon as representations of fact and purchasers should satisfy themselves by inspection or otherwise as to the accuracy of the statements contained therein.

Equipment: We have not tested the equipment or central heating system mentioned in these particulars and purchasers are advised to satisfy themselves as to their working order and condition.

Measurements: Great care is taken when measuring but measurements should not be relied upon for ordering carpets, equipment, etc.